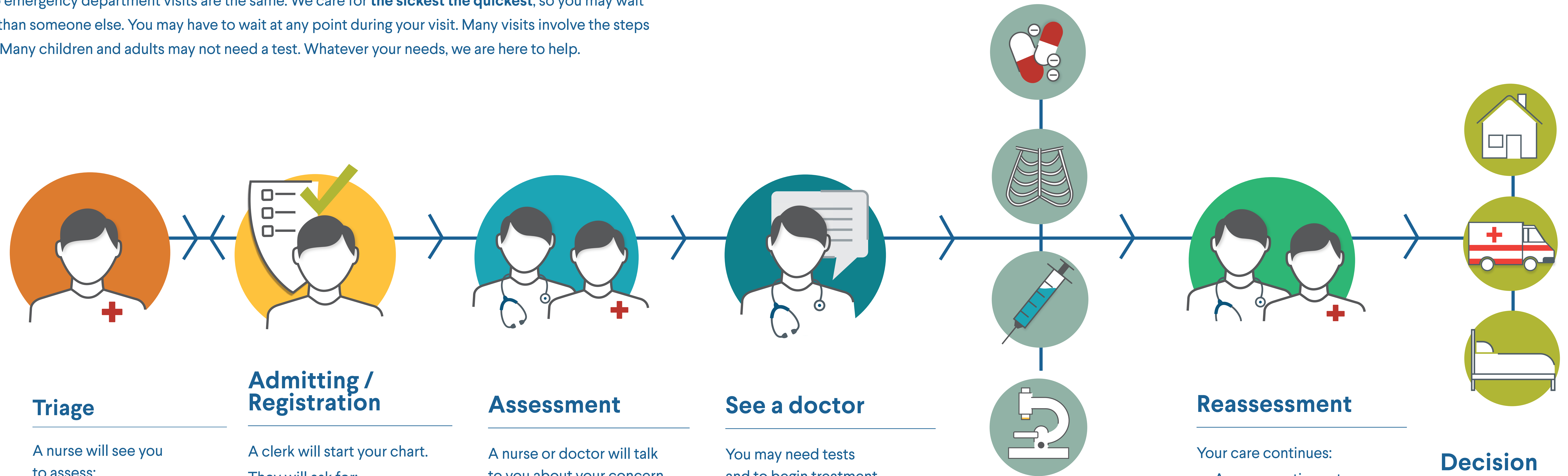


AN EMERGENCY VISIT

No two emergency department visits are the same. We care for **the sickest the quickest**, so you may wait longer than someone else. You may have to wait at any point during your visit. Many visits involve the steps below. Many children and adults may not need a test. Whatever your needs, we are here to help.



Triage

A nurse will see you to assess:

- Your needs
- How urgently you need care.

Admitting / Registration

A clerk will start your chart. They will ask for:

- Personal Health card
- Date of birth, address, phone number, etc

Assessment

A nurse or doctor will talk to you about your concern. You and your care team will make decisions about care together.

See a doctor

You may need tests and to begin treatment. You may be taken to a different area for tests.

Treatment

Treatment may include:

- Lab work
- X-rays
- Other tests.

Reassessment

Your care continues:

- A nurse continues to monitor you and treat you
- Your doctor will review your test results and begin a treatment plan or order other tests.

Decision

We will discuss how to manage your condition including follow up with your family doctor. You may be admitted to hospital, transferred to another site for treatment or sent home.

WHAT IS MY EXPECTED WAIT TIME?

Priority Level	Resuscitation	Emergent	Urgent	Less Urgent	Not urgent
Expected wait time:	no wait	🕒	🕒🕒	🕒🕒🕒	🕒🕒🕒🕒🕒