



AH2000 – POINT-OF-CARE TESTING

1.0 PURPOSE

To establish a framework for the governance and oversight of Point-of-Care Testing within Interior Health.

2.0 DEFINITIONS

Point of Care (POC)	Near to or at the site of the patient/client. ¹
Point-of-Care Testing (POCT)	<p>Testing performed outside a central laboratory environment, generally nearer to, or at the site of the patient/client, with the result leading to possible change in the care of the patient.^{1,2}</p> <p>POCT ranges between three levels of complexity, from simple procedures such as glucose testing, moderate-complexity procedures (including provider performed microscopy procedures), or high-complexity procedures such as influenza testing. Health Care Professionals delivering POCT usually use test kits, which may include hand-held devices to read blood, saliva, or urine samples.⁵</p> <p>All current IH POCT programs are itemized in Appendix 1.</p> <p>Synonyms: bedside testing, alternative site testing, near patient testing.</p>
Competency	The integration and application of knowledge, skills, attitudes and judgment required to perform safely, ethically and appropriately within an individual's practice or in a designated role or setting.
External Proficiency Testing	An external program in which samples are periodically sent to testing sites for analysis; results are tabulated by the program and a participating site can compare its results with those of other sites that use a similar method ⁴ (designed as a means of checking the accuracy of instrumentation and as a random check of operator technique).

3.0 POLICY

Interior Health Laboratory Services, under the direction of the Interior Health Laboratory Medical Director or designate, is responsible for the governance, oversight, operation and quality of all Interior Health Point-of-Care Testing (POCT).^{3,5}

Policy Sponsor: Vice President, People and Clinical Services	1 of 6
Policy Steward: IH Lab Quality Coordinator - POCT	
Date Approved: January 2012	Date Revised: August 12, 2014

3.1 Authority and Scope

This policy applies to all Point-of-Care Testing performed by employees of Interior Health and Medical Staff with privileges.

Oversight for Provincial POCT initiatives is provided by the Provincial Health Services Authority; therefore, all such Provincial POCT initiatives are out of scope for this policy.

Patient self-testing practices and their subsequent results are out of scope for this policy.

POCT performed by Interior Health employees outside of their assigned work duties are outside the scope of the policy. These employees act under their own authority and are not to be associated with any Interior Health endorsed activities.

3.2 Approval of POCT Practices

All requests for POCT are reviewed by the Interior Health Laboratory Regional Medical Director or designate in consultation with the Interior Health POCT Advisory Committee and the Interior Health Laboratory Quality Coordinator - POCT prior to approval.^{3,5} The evaluation process will include but not be limited to:

- the medical need and appropriateness for the desired application.
- anticipated improvement of patient outcomes (referenced by evidence based medicine).
- an analysis of the service required, the service provided and alternate options.
- method verification prior to implementation
- evaluation and approval of end-user proposals and protocols.
- financial and business analysis.
- client/stakeholder satisfaction

To ensure that funding has been identified to cover the costs of new POCT programs or of significant POCT program expansion; a completed Point-of-Care Testing Program Cost Estimation Form and/or an IH impact assessment must be approved by the requesting program's Vice President and by the Regional Director of Laboratory Services; as well as by the Area Director of Laboratory Operations of the supporting Laboratory, prior to final approval by the IH POCT Advisory Committee.

3.3 POCT Practice Standards

All POCT within Interior Health will be performed in accordance with Accreditation Canada Standards, Diagnostic Accreditation Program Standards and current best practice.

All personnel performing POCT must complete training and demonstrate competency for each specific Point-of-Care Test.^{3,5}

Personnel are required to demonstrate competency on an annual basis.^{4,5}

Current comprehensive procedures must be available for staff performing POCT. Procedures and processes are documented, current, accurate, and controlled.^{3,5}

Quality Assurance processes must be in place as mandated by the Diagnostic Accreditation Program and/or as determined by the Interior Health Laboratory Medical Director. This includes performance of formal External Proficiency Testing programs or of alternative proficiency testing procedures for all testing.³

Policy Sponsor: Vice President, People and Clinical Services	2 of 6
Policy Steward: IH Lab Quality Coordinator - POCT	
Date Approved: January 2012	Date Revised: August 12, 2014



POCT results are recorded with the patient's medical record manually or electronically and will, when possible, be included in the Laboratory Information System. Records are in a standardized format that provides necessary information for clinical decision making.^{3,5}

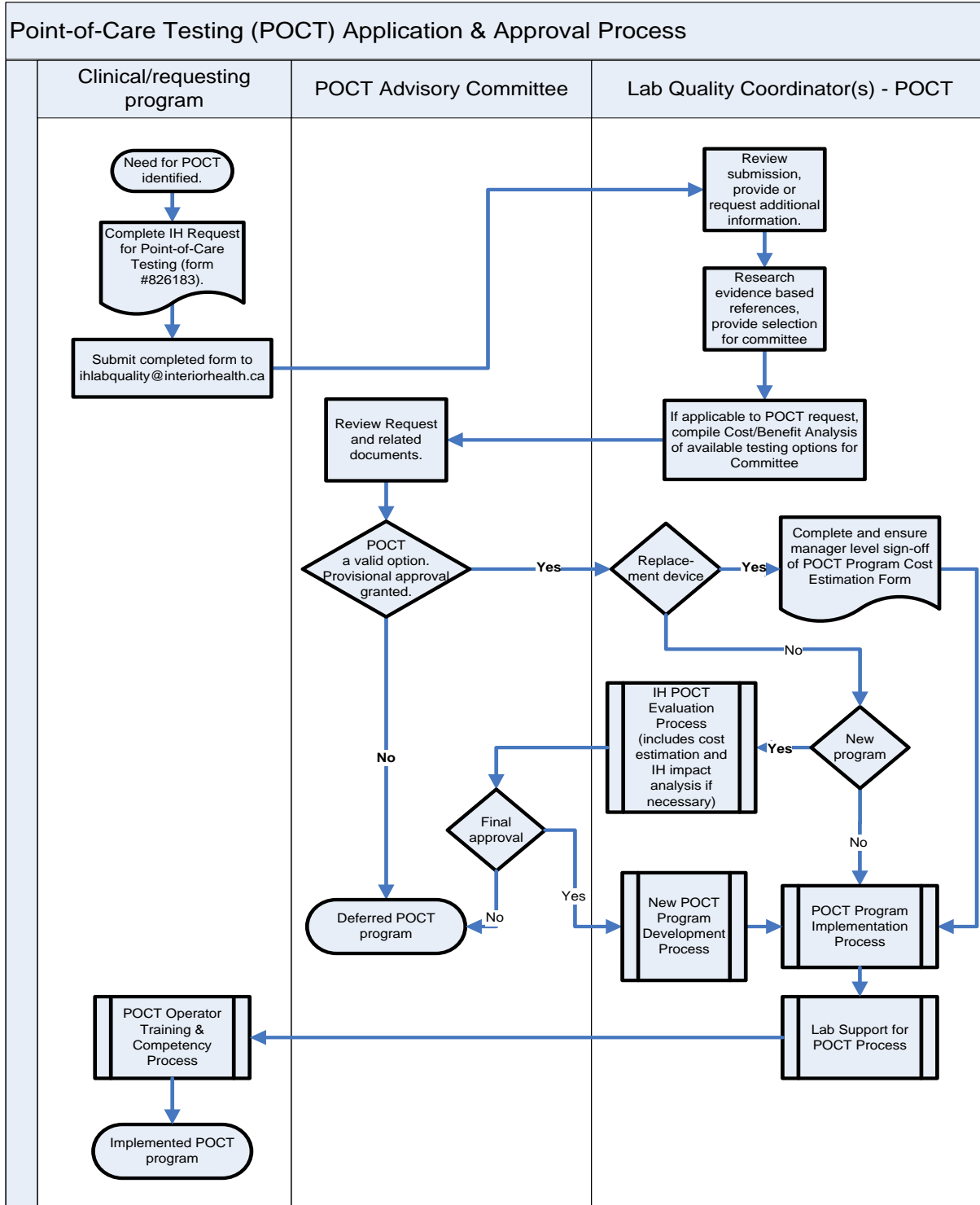
3.4 Compliance

POCT standard operating procedures must be followed.⁵ All efforts shall be made by stakeholders to maintain effective communication and to resolve identified issues.

Systemic failure to comply with defined policies, processes and procedures will result in removal of the Point-of-Care Testing at the direction of the Interior Health Laboratory Regional Medical Director.

Policy Sponsor: Vice President, People and Clinical Services	3 of 6
Policy Steward: IH Lab Quality Coordinator - POCT	
Date Approved: January 2012	Date Revised: August 12, 2014

4.0 PROCESS



Policy Sponsor: Vice President, People and Clinical Services	4 of 6
Policy Steward: IH Lab Quality Coordinator - POCT	
Date Approved: January 2012	Date Revised: August 12, 2014



5.0 RELATED DOCUMENTS

- [Request for Point-of-Care Testing, Form #826183](#)
- [Applying for Point-of-Care Testing \(POCT\) Procedure](#)
- [POCT Evaluation Process](#)
- [POCT Program Development Process](#)
- [POCT Program Implementation Process](#)
- [Lab Support for POCT Process](#)
- [POCT Operator Training and Competency Process](#)

6.0 REFERENCES

1. CLSI. *Selection Criteria For Point-of-Care Testing Devices; Approved Guideline*. CLSI document POCT09-A. Wayne, PA: Clinical and Laboratory Standards Institute; 2010.
2. ISO. *Point-of-Care Testing (POCT) – Requirements for quality and competence*. ISO 22870. Geneva, Switzerland: International Organization for Standardization; 2006.
3. DAP. *Diagnostic Accreditation Standards, Point of Care Testing (POCT)*; 2008.
4. CLSI. *Point-of-Care In Vitro Diagnostic (IVD) Testing: Approved Guideline – Second Edition*. CLSI document POCT4-A2. Wayne, PA: Clinical and Laboratory Standards Institute; 2006.
5. Accreditation Canada. *Qmentum Program Standards, Point-of-Care Testing*; 2010

7.0 Appendix 1: IH Point-of-Care Testing Menu

Practice Area	Common POCT Tests <i>May not be available at all sites. IH POCT Application & Approval Process must be followed.</i>	Approved Device/Test Kit/Method
General Medicine	Urinalysis Whole Blood Glucose* Blood Gas/critical care panel	Siemens Multistix 10SG Accu-Chek® Inform II* GEM 4000
High Acuity Response Teams	Blood Gases/critical care panel	i-STAT
ED	Urinalysis Preg Tests Whole Blood Glucose* Blood Gases/critical care panel Troponin INR	Siemens Multistix 10SG manually or using Clinitek 50 or Clinitek Status N.C.S. hCG One Step or Clinitest hCG with Clinitek Status Accu-Chek® Inform II* i-STAT or GEM (where supported by Respiratory) i-STAT i-STAT
ICU	Urinalysis Whole Blood Glucose* Blood Gases/critical care panel	Siemens Multistix 10SG Accu-Chek® Inform II* GEM 4000 (where supported by Respiratory)

Policy Sponsor: Vice President, People and Clinical Services	5 of 6
Policy Steward: IH Lab Quality Coordinator - POCT	
Date Approved: January 2012	Date Revised: August 12, 2014



Practice Area	Common POCT Tests <i>May not be available at all sites. IH POCT Application & Approval Process must be followed.</i>	Approved Device/Test Kit/Method
General Surgery	Whole Blood Glucose* Blood Gases/critical care panel INR Hgb	Accu-Chek® Inform II* i-STAT i-STAT HemoCue or i-STAT
Cardiac Surgery	Whole Blood Glucose* Blood Gases/critical care panel Activated Clotting Time Hemostasis assessment	Accu-Chek® Inform II* GEM 4000 Medtronic ACT+ TEG® Thromboelastograph
DI: Catheterization Lab	Activated Clotting Time	Hemochron
Diabetes Education	HbA1C	Siemens DCA systems
Nursery	Whole Blood Glucose*	Accu-Chek® Inform II*
Colposcopy Clinics &/or Women's Clinics	Preg Tests	N.C.S. hCG One Step
Mental Health and Addictions	Urine Drug Screen for Methadone metabolites etc.	Sure-Step Multi-Drug One Step Screen Test Card (Urine)
CIHS: Promotion and Prevention	Preg Tests	N.C.S. hCG One Step
Residential	Whole Blood Glucose*	Accu-Chek® Inform II*
Peri-op	Preg Tests	N.C.S. hCG One Step

*IH-wide program, pre-approved for all IH sites and Practice Areas.

Policy Sponsor: Vice President, People and Clinical Services	6 of 6
Policy Steward: IH Lab Quality Coordinator - POCT	
Date Approved: January 2012	Date Revised: August 12, 2014