



# COVID-19

## MATERNAL / CHILD VISITOR RESTRICTIONS IN EFFECT

**Do not visit if you are sick.**

Until further notice, these are the visitor restrictions:

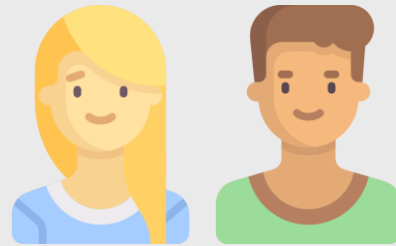
### Maternity Inpatient



**ONE** adult caregiver/  
support person

(not including a doula who meets the IH screening criteria)

### Pediatric Inpatient and Neonatal Nursery



**TWO**

adult caregivers/support people

### Urgent Care Centre



**ONE**

adult caregiver/support person

### Outpatient Clinics



**ONE**

adult caregiver/support person

- To keep our patients, families and staff safe and in keeping with the provincial health officers recommendations for physical distancing, we are limiting the number of visitors entering our buildings, as well as number of visitors at the bedside.
- We are sorry that no other visitors are able to visit at this time. This includes child visitors such as siblings or friends.
- For the duration of your/your child's time at the hospital, only the adult(s) you designate will be allowed to enter.