

Bronchoscopy



Interior Health
Every person matters

Patient Information

www.interiorhealth.ca

Your Bronchoscopy is scheduled for

Date of test _____

Time of your test _____

Report to: Ambulatory Care Unit

Getting Ready For Your Test

If you have questions or concerns, please contact your family doctor or respirologist.

Do not eat or drink anything 8 hours before your test (such as: gum, candy, antacids, etc.).

If you are on **insulin or diabetic/blood thinning medication**, check with your doctor if/when you should stop taking them before your test.

Tell your doctor if you have a bleeding or clotting issue. Also, let your doctor know if you have an artificial heart valve (you may need antibiotics).

If you are on any other medication, take them with a sip of water 2 or more hours before the test is booked.

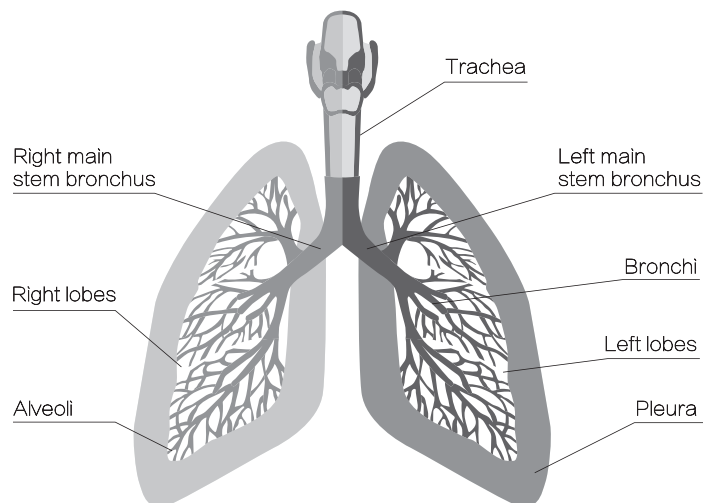
You should use puffers and inhalers as ordered.

Bring all your medications with you in their original containers.

What is a Bronchoscopy?

A “Bron-kos-ko-pee” is a test which allows the doctor to see into the air passages: the larynx (voice box), trachea (windpipe) and major bronchial tubes.

During the bronchoscopy, a thin flexible tube is passed gently through your nose or mouth. There is a tiny camera and light at the end of the tube. This allows the doctor to see inside your air passage and take small tissue samples or fluid for the lab to test.



Healthlink BC Call 8-1-1 www.healthlinkbc.ca	Nurse	24 hours a day	Daily	<i>Call 8-1-1 to speak with a nurse, ask a dietitian about nutrition, or a pharmacist about your medication.</i>
	Dietitian	9 am–5 pm	Mon–Fri	
	Pharmacist	5 pm–9 am	Daily	
	Hearing Impaired	Call 7-1-1		

Bronchoscopy (continued)

What Happens During This Test?

- The nurse will take a short health history, check your blood pressure, temperature, and start an intravenous (IV).
- Your throat will be sprayed with a medication to numb your throat. Medication will be given through the IV to help you relax.
- During the test you will not feel pain, but you may feel short of breath or the need to cough.

After the Test

You will stay in recovery for at least 2 hours after the test. The nurse will check your blood pressure, oxygen and that you are breathing easily.

Pain Control

You may have a sore throat and a hoarse voice for a couple of days after the test. You may use throat lozenges and Regular or Extra Strength Tylenol®.

Nutrition

The nurse will tell you when you are able to eat and drink (this may take 2– 4 hours) and give you information to take home.

Medication

Take your regular medications unless changed by your doctor. If you have questions about any of your medications, vitamins or herbals, talk with your family doctor.

Call the Doctor if you have:

- pain not helped by medication
- shortness of breath
- chest pain
- trouble swallowing
- more than a small amount of blood when you cough

If you are unable to contact your family doctor or respirologist, go to the nearest Emergency Room.

Discharge Information

Anaesthetics and sedatives can impair your judgment and coordination:

- You **MUST** go home with a responsible person who will stay with you for the rest of the day and night.
- If you take a taxi home, a responsible person (other than the taxi driver) must be with you.

For at least 24 hours after your test, **DO NOT:**

- drive any type of vehicle
- ride as a passenger on a motorcycle or snowmobile
- operate any power tools
- sign any legal document or important papers
- drink alcohol or use recreational drugs
- care for others

Next appointment

Only if needed

_____ days / weeks with

(call doctor's office for appointment)

Date _____ Time _____

Doctor _____