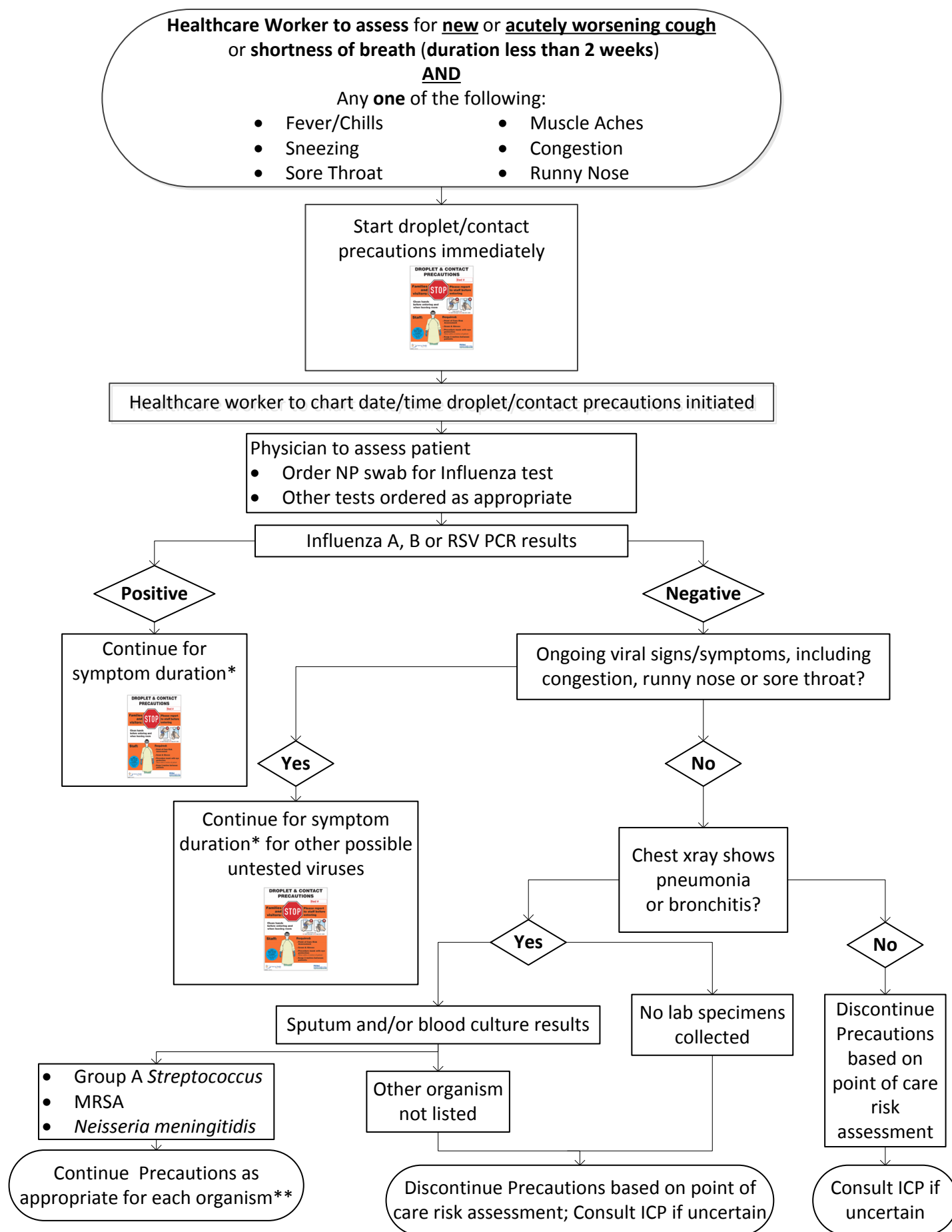


# Acute Respiratory Illness Pathway (Adult Patients)



\*Symptoms considered resolved when:

- patient has returned to baseline respiratory status with respect to oxygen requirements and/or any pre-existing cough or other respiratory issues **and**
- patient has been afebrile for  $\geq 24$  hours **and**
- for **Influenza** positive patients only, it has been at least 5 days since symptoms onset

\*\*<https://www.interiorhealth.ca/sites/default/files/PDFS/all-care-areas-transmission-tables.pdf>