

A **PRINTED** copy of this quick guide may not be the most recent version.

Measles Quick Guide

1. Illness Presentation

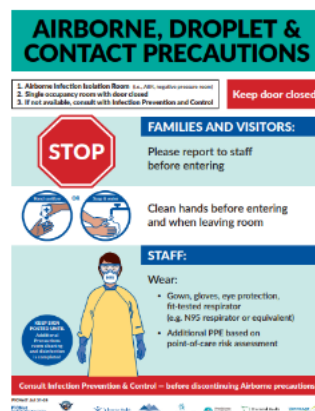
- Fever $\geq 38.3^{\circ}\text{C}$ **AND**
- **C**ough, **C**oryza (head cold like symptoms) OR **C**onjunctivitis **AND**
- Generalized maculopapular rash (dusky red, blotchy rash that begins on the face and spreads all over the body).
- Rash appears 3-7 days after symptom onset then becomes more generalized. Some patients may exhibit Koplik spots ("grains of salt" next to second molar) on the inside of the mouth. Absence of Koplik spots should not exclude a clinical diagnosis of measles.

2. Mode of transmission

- As an airborne disease it is spread through the air.
- Measles can survive up to two hours in the air even after the contagious person has left the space.
- Measles can also be spread through coughing and sneezing of an infected person.
- Less commonly spread by articles freshly soiled with nose and throat secretions.

3. Additional Precautions

- Confirmed or suspected cases must immediately be placed on [Airborne, Droplet & Contact Precautions](#) – do NOT wait for laboratory confirmation of the case.
- N95 respirator, Eye Protection, Gloves, Gown.
- Patients being admitted with acute measles infection are likely experiencing symptoms that may expose staff to direct contact with respiratory secretions (coughing, sneezing, contaminating the air and their environment). This is why Airborne, Droplet & Contact Precautions are recommended by IPAC.



Interior Health would like to recognize and acknowledge the traditional, ancestral, and unceded territories of the Däkelh Dené, Ktunaxa, Nlaka'pamux, Secwépemc, St'át'imc, syilx, and Tsilhqot'in Nations where we live, learn, collaborate, and work together.

4. Testing

- **Measles PCR urine samples** may be collected up to 14 days after rash onset.
- **Measles PCR nasopharyngeal swab** may be collected up to 8 days after rash onset.
- Serology testing for measles specific IgM and IgG class antibodies.
- Refer to IHA Microbiology Test Directory for guidance on specimen ordering and handling [microbiology-guide-to-specimen-ordering-collection-and-transport-information.pdf](#).

5. Reporting

- Any suspected or confirmed case of measles must **immediately** be reported to
 - CDU (1-866- 778-7736) Monday to Friday 0830-1630 or
 - MHO On-call (1-866-457-5648) after hours, weekends, and STATs.
- Report suspected or confirmed cases to Infection Preventionist and/or Medical Microbiology On- Call

Effective Date	July 1, 2023		
Last Reviewed	March 20, 2025		
Partners Reviewed			
Approved By	IPAC		
Owner	Infection Prevention and Control		
Revision History	Date	Section	Revision