



Interior Health

EMERGENCY MEDICINE CAREERS

VISIT [BETTERHERE.CA](https://betterhere.ca)

SEND US AN EMAIL



Interior Health would like to recognize and acknowledge the traditional, ancestral, and unceded territories of the Dăkelh Dené, Ktunaxa, Nlaka'pamux, Secwépemc, St'át'imc, Syilx, and Tăilhqot'in Nations, where we live, learn, collaborate and work together.



TABLE OF CONTENTS

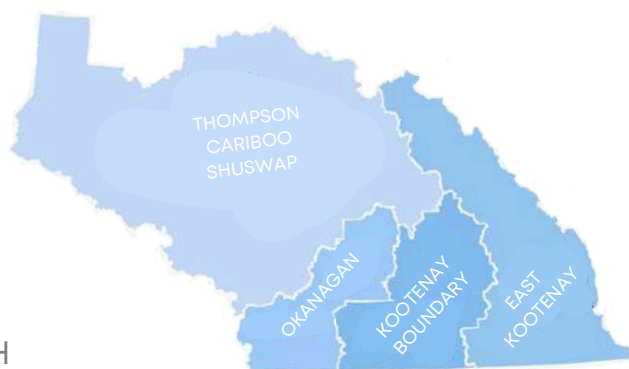
Click on a title to go directly to that page.

Interior Health Region Map	4
2024 Quick Facts	5
Work Options	6
100 Mile House	7
Castlegar	9
Cranbrook	11
Creston	13
Fernie	15
Golden	17
Grand Forks	19
Invermere	21
Kamloops	23
Kelowna	25
Lillooet	27
Merritt	29
Nakusp	31
Nelson	33
Oliver	35
Penticton	37
Princeton	39
Revelstoke	41
Salmon Arm	43
Trail	45
Vernon	47
Williams Lake	49
Locum Opportunities	51
Urgent Locums	56
Learning Opportunities	57

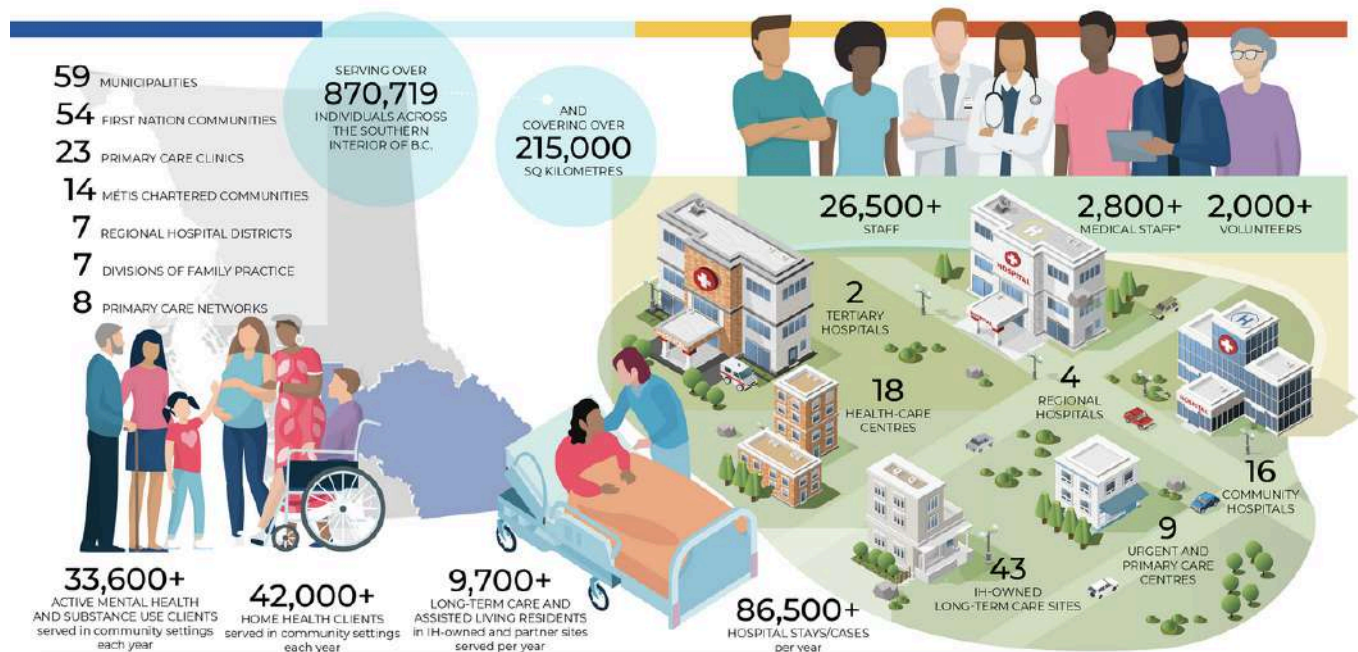




- NORTHERN HEALTH
- ISLAND HEALTH
- **INTERIOR HEALTH**
- FRASER HEALTH AUTHORITY
- VANCOUVER COASTAL HEALTH



2024 QUICK FACTS



Caring lies at the core of our identity, instilling optimism and confidence as we uphold the highest healthcare standards for the members of our beautiful region.

For over two decades, we have been dedicated to enhancing the health and wellness of more than 870,000 individuals residing in British Columbia's interior, striving for a healthier future. Our team, comprised of over 26,500 staff members and almost 2,800 medical professionals, is actively shaping the trajectory of healthcare by embracing innovation and fostering professional growth.

In partnership with the provincial government, healthcare organizations, and community leaders, we take pride in offering impactful solutions to our diverse regions, spanning 215,000 square kilometers of ancestral lands encompassing the territories of seven Interior First Nations and 15 Métis Chartered communities. Our commitment remains unwavering as we tirelessly strive to ensure comprehensive care for all and continuously explore inventive methods of healthcare delivery.

"I've learned that people will forget what you said, people will forget what you did, but people will never forget how you made them feel."

MAYA ANGELOU



WHY CHOOSE INTERIOR HEALTH?

We prioritize your well-being by offering various working arrangements and a diverse scope of practice that cater to your lifestyle and preferences.

Our team is dedicated to fostering an environment where you can excel both professionally and personally, with ample opportunities for [training and development](#).

Whether you're looking for a *full-time or part-time role*, a *temporary position*, or a *flexible locum opportunity*, Interior Health has something for everyone.

WANT TO DO A TEST RUN FIRST? VISIT US FOR A LOCUM!

Curious about the mountain towns that have won over our medical staff's hearts? Not sure if living on a pristine lake flanked by award-winning vineyards and lush orchards is right for you? Want to test if the numerous prestigious golf courses and fish-filled rivers are really just minutes away from your doorstep?

We don't blame you. Visit us in this remarkable corner of the world and discover our communities firsthand with a [locum](#).

CHOOSE FROM A VARIETY OF WORKPLACES

Interior Health offers a range of exciting opportunities for medical staff, catering to diverse career preferences and lifestyles. Whether you're interested in working within our well-equipped hospitals, where you can engage in a broad spectrum of specialties and acute care, or prefer the dynamic environment of Urgent Primary Care Centres (UPCCs) with their focus on providing timely, comprehensive care to patients, Interior Health has a role for you.

- THOMPSON CARIBOO SHUSWAP -

100 MILE HOUSE

BROWSE CAREERS

TOURISM / WEATHER / HOUSING

With a vast wilderness and rich history, countless adventures in the great outdoors await you in 100 Mile House. The community offers rustic charm, beautiful lakes, and a friendly atmosphere. Fishing is extremely popular at any of the one hundred lakes surrounding the area. Known as the *Nordic Skiing Capital of British Columbia*, 100 Mile House boasts over 150 kilometers of groomed trails which convert to excellent mountain biking trails in the summer.

100 MILE HOUSE DISTRICT HOSPITAL

100 Mile House District Hospital is a 16-bed rural community hospital offering emergency, low-risk obstetrics, general medical, and outpatient ambulatory care services. The updated and recently renovated ER includes full 24/7 radiology and laboratory services. Access to CT scanning and ultrasound is an hour away. Other features include portable bed-side ultrasound, and a well-equipped trauma bay.

Specialists are available in Williams Lake, just a one-hour drive away. Currently, this includes three general surgeons, three OB/GYNs, a general internist, a pediatrician, and a psychiatrist. They also offer CT during the day. Kamloops, a two-hour drive, is the nearest tertiary hospital with most specialties, except for interventional cardiology. We also have access to specialist advice electronically within the hospital system.

MAY BE ELIGIBLE FOR THE FOLLOWING RURAL BENEFITS

Recruitment Incentive: \$20,000

Relocation: Between \$9,000-15,000 (*Based on Location*)

Fee Premium: 16.66%

Annual Retention Fee: \$25,818.24

CME Funding: Up to \$5,720 for Over Four Years (*Based on Location*)

- KOOTENAY BOUNDARY -

CASTLEGAR

BROWSE CAREERS

TOURISM / WEATHER / HOUSING

Located in the Selkirk Mountain range, Castlegar has become known as one of the most desirable places to live in the region. A vibrant mix of commerce, recreation, and community makes this culturally rich community an easy choice for a comfortable and active way of life. Natural beauty and rugged adventure is at your doorstep in Castlegar. Escape to world-class skiing at nearby Red Mountain or experience kayaking adventures the Slocan River.

CASTLEGAR & DISTRICT HEALTH CENTRE

The Castlegar & District Health Centre (CDH) services residents of Castlegar and Area. The community health centre offers a variety of services in one location that may not be available at the regional site in Trail.

Community health centres do not have acute care beds, but may provide basic laboratory and radiology, ER services from 8:00 AM - 8:00 PM, outpatient ambulatory care, community services, long-term residential care services, and/or on-site doctors' offices, three emergency beds, and Level V Trauma.

MAY BE ELIGIBLE FOR THE FOLLOWING RURAL BENEFITS

Recruitment Incentive: \$15,000

Relocation: Between \$9,000-15,000 (*Based on Location*)

Fee Premium: 11.90%

Annual Retention Fee: \$18,441.60

CME Funding: Up to \$5,720 for Over Four Years (*Based on Location*)

- EAST KOOTENAYS -

CRANBROOK

BROWSE CAREERS

TOURISM / WEATHER / HOUSING

The landscape around Cranbrook is a playground for the active soul, with Wasa and Moyie lakes for water enthusiasts, and the St. Mary River providing a scenic route for canoeing, kayaking, and fly fishing. The nearby mountains offer gorgeous trails for hiking, biking, and rock climbing, while winter brings skiing and snowboarding adventures along the powder highway. The area features over seven stunning golf courses within a 24-minute drive.

EAST KOOTENAY REGIONAL HOSPITAL

East Kootenay Regional Hospital (EKRH) serves as an 80-bed regional referral centre for approximately 82,000 individuals in the East Kootenay Area. We have 24-hour emergency and trauma services with 16 dedicated beds, and a six bed ICU. The High Acuity Response Team (HART) team provides mobile critical care for rural patients requiring advanced medical support, to stabilize and transfer patients to higher-level care. This four floor facility includes a level three laboratory, complete with a recently purchased PCR machine and MALDI/TOF. In the new MRI suite, there are new MRI and SPECT CT machines, with a new CT scanner earmarked for purchase.

Upcoming construction projects and facility upgrades include a new NICU, renovation of the emergency department triage, and new oncology and renal departments. Our dedicated team is committed to delivering top-notch health care to Cranbrook and the wider East Kootenay region. With a comprehensive range of services, including internal medicine, obstetrics and gynecology, general surgery, orthopedics, ophthalmology, ENT, pathology, psychiatry, pediatrics, anesthesia, radiology, urology, and family practice inpatient care, our hospital offers an expansive platform to showcase your expertise.

MAY BE ELIGIBLE FOR THE FOLLOWING RURAL BENEFITS

Recruitment Incentive: \$20,000

Relocation: Between \$9,000-15,000 *(Based on Location)*

Fee Premium: 14.00%

Annual Retention Fee: \$21,696.00

CME Funding: Up to \$5,720 for Over Four Years *(Based on Location)*

- KOOTENAY BOUNDARY -

CRESTON

BROWSE CAREERS

TOURISM / WEATHER / HOUSING

The quiet community of Creston is located south of Kootenay Lake, sheltered between the Purcell and Selkirk Mountains. These breathtaking, snow-capped mountain peaks combined with fields of grain, and deep clear lakes, afford those who call the Creston Valley home ample opportunities to enjoy outdoor adventures. Abundant farms and orchards support a farm to table lifestyle creating a welcoming community of grounded, hardworking people.

CRESTON VALLEY HOSPITAL

Creston Valley Hospital (CVH) is a 20-bed Acute Care Hospital with 24-hour on call physician emergency services. Acute patient services include surgery, medicine, obstetrics, pediatrics, and dialysis. Diagnostics are provided through imaging, ultrasound and lab. Support services are provided through pharmacy, dietary, physiotherapy and occupational therapy.

Visiting specialists provide general surgery, internal medicine, ears/nose/throat, neurology, pediatrics, obstetrics and gynecology, radiology, urology, and gastroenterology consultations to the Creston population.

The hospital operates a general practitioner surgical day program that includes day procedures, endoscopy, colonoscopy and C-sections.

MAY BE ELIGIBLE FOR THE FOLLOWING RURAL BENEFITS

Recruitment Incentive: \$20,000

Relocation: Between \$9,000-15,000 (*Based on Location*)

Fee Premium: 16.66%

Annual Retention Fee: \$25,818.24

CME Funding: Up to \$5,720 for Over Four Years (*Based on Location*)

- EAST KOOTENAYS -

FERNIE

BROWSE CAREERS

TOURISM / WEATHER / HOUSING

Rooted in the rugged Rocky Mountains, Fernie's panoramic mountain vistas provide the perfect place to explore. Fernie offers a unique opportunity to enjoy untouched natural beauty with year round adventures. From a world-class ski hill renowned for fluffy winter powder and summer bike trails, to rivers teeming with fish and white water perfect for rafting; outdoor recreation is a lifestyle. Fernie's tree-trimmed avenues and flower lined patios lend character as well.

ELK VALLEY HOSPITAL

The Elk Valley Hospital (EVH) is a busy and challenging 20-bed, rural hospital set in the picturesque Elk Valley.

The Elk Valley Hospital serves as a hub for the South Country and for the Primary and Community Health Centre's in the neighboring communities of Sparwood and Elkford, respectively.

Elk Valley Hospital services approximately 18,000 people in Fernie, Sparwood, Elkford and the south country.

MAY BE ELIGIBLE FOR THE FOLLOWING RURAL BENEFITS

Recruitment Incentive: \$20,000

Relocation: Between \$9,000-15,000 (*Based on Location*)

Fee Premium: 15.54%

Annual Retention Fee: \$24,082.56

CME Funding: Up to \$5,720 for Over Four Years (*Based on Location*)

- EAST KOOTENAYS -

GOLDEN

BROWSE CAREERS

TOURISM

/

WEATHER

/

HOUSING

Stunning scenery, crisp mountain air, and world revered outdoor recreation are at your doorstep. The cozy mountain town of Golden lies at the junction of the lazy Columbia River and roaring Kicking Horse River providing a wealth of outdoor adventures for every skill level and every interest. With spectacular mountain biking, ice-climbing, river rafting, and six national and provincial parks in the region, Golden is a utopia for the outdoor enthusiast.

GOLDEN & DISTRICT HOSPITAL

The Elk Valley Hospital (EVH) is a busy and challenging 20-bed, rural hospital set in the picturesque Elk Valley.

The Elk Valley Hospital serves as a hub for the South Country and for the Primary and Community Health Centre's in the neighboring communities of Sparwood and Elkford, respectively.

Elk Valley Hospital services approximately 18,000 people in Fernie, Sparwood, Elkford and the south country.

MAY BE ELIGIBLE FOR THE FOLLOWING RURAL BENEFITS

Recruitment Incentive: \$20,000

Relocation: Between \$9,000-15,000 (*Based on Location*)

Fee Premium: 18.90%

Annual Retention Fee: \$29,289.60

CME Funding: Up to \$5,720 for Over Four Years (*Based on Location*)

- KOOTENAY BOUNDARY -

GRAND FORKS

BROWSE CAREERS

TOURISM / WEATHER / HOUSING

Grand Forks' sprawling hills, treed mountains, and shady river set the back drop for the cultural and commercial centre of the boundary country. Enjoy a combination of ambient small town charm and urban convenience. Soak up the sun in the summer during an afternoon on Christina Lake or traverse the local trails on horseback. When the snow falls head to nearby Phoenix Mountain for skiing or stroll through the quaint downtown core.

BOUNDARY DISTRICT HOSPITAL

Boundary District Hospital (BDH) is a level one community hospital with 12 beds and the 24/7 emergency room.

The closest major medical centre is a transfer to Kelowna (231 KM) or to a regional hospital in Trail (100 KM).

MAY BE ELIGIBLE FOR THE FOLLOWING RURAL BENEFITS

Recruitment Incentive: \$20,000

Relocation: Between \$9,000-15,000 (*Based on Location*)

Fee Premium: 18.62%

Annual Retention Fee: \$28,855.65

CME Funding: Up to \$5,720 for Over Four Years (*Based on Location*)

- EAST KOOTENAYS -

INVERMERE

BROWSE CAREERS

TOURISM / WEATHER / HOUSING

Perched on the edge of Lake Windermere, in the valley between the Rocky and Purcell Mountain ranges, Invermere is the economic hub of the Columbia Valley. Offering spectacular mountain scenery, abundant outdoor activity and nearby Fairmont and Radium hot springs, Invermere benefits from a healthy tourism industry. Recreation and culture unite with year-round recreational opportunities including heli-skiing, snowmobiling, white-water rafting, and golf.

INVERMERE DISTRICT HOSPITAL

The Invermere District Hospital (IDH) is a unique facility in that all healthcare services across the continuum of care are under one roof, providing for a very cohesive approach to patient care.

The hospital is a level one community hospital with a very busy state of the art, well functioning 12 bed emergency department. The hospital was built in 1991 and the Columbia House Residential Care was added in 1994, then later expanded to 35 beds in 2005. A new public/private share residential care, Ivy House, has recently been built in the next block.

MAY BE ELIGIBLE FOR THE FOLLOWING RURAL BENEFITS

Recruitment Incentive: \$20,000

Relocation: Between \$9,000-15,000 (*Based on Location*)

Fee Premium: 20.02%

Annual Retention Fee: \$31,025.28

CME Funding: Up to \$5,720 for Over Four Years (*Based on Location*)

- THOMPSON CARIBOO SHUSWAP -

KAMLOOPS

BROWSE CAREERS

TOURISM / WEATHER / HOUSING

Set amid sandstone canyons, rolling grasslands, and magnificent evergreen woods, Kamloops is a flourishing city with an energetic character. With eight beautiful provincial parks and over 100 lakes nearby, Kamloops offers fantastic opportunities for outdoor activities like fishing, kayaking, hiking, biking, golfing, and camping. Come winter, Sun Peaks Resort transforms into a mecca for skiers and snowboarders, just a quick 45-minute drive out of the city.

ROYAL INLAND HOSPITAL

The Royal Inland Hospital (RIH) is a 273-bed facility that serves as the referral centre for approximately 250,000 people, and is located in the Thompson Cariboo Shuswap Health Service Area. As one of two Interior Health tertiary referral hospitals and level one trauma centres, RIH receives over 250 major trauma and 72,000 ED visits per year.

The Phil and Jennie Gagliardi Tower opened at RIH in the summer of 2022. Among other services, the tower includes child and adolescent mental-health and substance-use inpatient unit as well as a 30 bed general psychiatric unit - 20 general, 10 high observation beds, and three seclusion beds.

COMPENSTATION AND RELOCATION

Estimated Gross Income: \$403,000 + MOCAP Level 1 + FFS Billings for Trauma

Relocation: Between \$9,000-15,000 (*Based on Location*)

- OKANAGAN -

KELOWNA

BROWSE CAREERS

TOURISM / WEATHER / HOUSING

Glistening water below lush mountains, dotted with parks frame the Okanagan's largest and liveliest population centre. Okanagan Lake is the perfect place to sail, kayak, or relax on the beach. Rolling greens offer world class golfing, minutes away from spectacular hiking and biking trails. In the winter enjoy ski resorts and skating rinks right at your fingertips. Kelowna offers something for everyone with orchards, vineyards and all the amenities of a major centre.

KELOWNA GENERAL HOSPITAL

Kelowna General Hospital (KGH) is one of two tertiary hospitals within Interior Health and is the region's main referral centre offering a full range of services with approximately 400 beds and over 84,000 ED visits yearly. Kelowna General Hospital is home to the Interior Heart & Surgical Centre (IHSC) which opened in 2015 and is B.C.'s only cardiac critical care centre outside of Victoria and the Lower Mainland. IHSC is KGH's principal surgical site and features 12 specialized operating rooms created for thoracic, urology, neurosurgery, vascular, plastics, obstetrics and gynecology, ears/nose/throat, orthopedics, and general and trauma surgeries with two ORs dedicated to cardiac surgery.

Our state-of-the-art Centennial Building boasts a total of 360,000 square feet, an expanded emergency and ambulatory care department, new medical inpatient units, modern operating rooms and a rooftop helipad. Within the Interior Heart & Surgical Centre, KGH has a modern maternity ward and adjacent neonatal intensive care unit. KGH has a dedicated pediatric ward, as well as, adolescent and adult psychiatry units. Enhanced laboratory and clinical departments are found in the new Dr. Walter Anderson Building.

KGH is also a teaching centre for the Southern Medical Program affiliated with UBC, and has an academic campus that serves as a satellite for the University of British Columbia Medical School. KGH has become one of B.C.'s leading health care centres.

COMPENSTATION AND RELOCATION

Estimated Gross Income: \$300,000 - \$400,000

Relocation: Between \$9,000-15,000 (*Based on Location*)

- THOMPSON CARIBOO SHUSWAP -

LILLOOET

BROWSE CAREERS

TOURISM / WEATHER / HOUSING

Lillooet's legendary mountain scenery, history and vibrant community make it a wonderful place to live, work and play. Encapsulated by breathtaking mountains and nestled on the banks of the Fraser River, Lillooet is brimming with amusement for people of all ages. Hundreds of kilometers of trail systems and surrounding wilderness provide incredible opportunities for hiking, wildlife viewing, ice climbing, and endless opportunities to explore.

LILLOOET DISTRICT HOSPITAL

The Lillooet District Hospital (LDH) is a six-bed community hospital providing standard and emergency medical services 24-hours per day. Additional services include maternity care, medical imaging (x-ray, electrocardiogram, holter monitoring), laboratory, day surgeries, dietitian/diabetes educator, mental health and addictions, alcohol and drug counseling, home and community care, home support, residential care, palliative care and respite care. Attached to the hospital is the 22 bed Mountain View Lodge residential care facility.

In emergency situations this community and physicians are supported by the High Acuity Response Team (HART). HART team consists of dedicated, highly trained critical care nurses responding with a B.C. Ambulance Service (BCAS) basic life support ambulance team to provide ground or air transport for acutely ill and injured patients from outlying rural and remote communities to higher levels of care. When required, a respiratory therapist will also be called in to assist. This advanced support lets physicians remain in the community while ensuring critically ill patients are transported by specialists. HART nurses for this community are based at Royal Inland Hospital in Kamloops, where they support the ED and ICU when not involved in patient transports.

MAY BE ELIGIBLE FOR THE FOLLOWING RURAL BENEFITS

Recruitment Incentive: \$15,000

Relocation: Between \$9,000-15,000 (*Based on Location*)

Fee Premium: 13.97%

Annual Retention Fee: \$21,671.76

CME Funding: Up to \$5,720 for Over Four Years (*Based on Location*)

- THOMPSON CARIBOO SHUSWAP -

MERRITT

BROWSE CAREERS

TOURISM / WEATHER / HOUSING

Rolling hills, sparkling lakes, and endless hours of sunshine every year make Merritt a haven for four-season outdoor recreation. Nearby Nicola Lake offers endless choices for water activities. The area hosts the opportunity for horseback riding as well as camping, and fishing, mountain biking, and hiking. Winter brings champagne powder and opportunities for Nordic skiing, snowshoeing, snowmobiling, ice fishing, and curling.

NICOLA VALLEY HOSPITAL

Nicola Valley Hospital (NVH) is a 24-hour level one community hospital with a 24-hour emergency room. This facility has eight acute care beds, six stretcher beds in the emergency room. The hospital also provides inpatient and outpatient services for laboratory, electrocardiogram (ECG) service, radiology, physiotherapy, and spirometry. Additional services include home care, home support, public health, diabetes and dietician teaching, as well as mental health services. There is residential care facility located only three kilometers from the hospital.

Kamloops is the nearest tertiary referral site. Hospital transportation is supported by an ambulance station that is located on same property as the hospital. In emergency situations, a helicopter and the High Acuity Response Team (HART) are dispatched from Kamloops to transport the patient from the site to an advanced centre for additional acute care.

MAY BE ELIGIBLE FOR THE FOLLOWING RURAL BENEFITS

Recruitment Incentive: \$15,000

Relocation: Between \$9,000-15,000 (*Based on Location*)

Fee Premium: 12.50%

Annual Retention Fee: \$19,363.68

CME Funding: Up to \$5,720 for Over Four Years (*Based on Location*)

- KOOTENAY BOUNDARY -

NAKUSP

BROWSE CAREERS

TOURISM / WEATHER / HOUSING

Nakusp is fondly referred to as the hidden gem of the Kootenays. The Arrow Lakes and surrounding area offer beautiful scenery and a wide array of outdoor recreational opportunities. In the summer, experience world-class fishing, horseback riding, and golfing. Winter turns Nakusp into a virtual wonderland with great ice fishing, skiing, snowshoeing, and snowmobiling. After your activities, enjoy the soothing waters of the Nakusp or Halcyon Hot Springs.

ARROW LAKES HOSPITAL

The Arrow Lakes Hospital (ALH) is a level one community hospital in the Kootenay Boundary health service area, located on the beautiful Arrow Lakes north of Nelson and east of Vernon in the idyllic West Kootenays.

The hospital has six acute care beds, 20 extended care beds, and a well equipped, fully-functioning emergency department providing 24/7 medical care for both emergency cases and booked out-patient procedures. Diagnostic services are provided by the x-ray and laboratory departments. Visiting respiratory therapists are able to perform spirometry and sleep apnea assessments. Physiotherapy, occupational health, mental health, home care nursing, and public health all have offices on site.

Visiting specialist services include those for internal medicine, orthopedic, pediatrics, psychiatry and chiropractic.

MAY BE ELIGIBLE FOR THE FOLLOWING RURAL BENEFITS

Recruitment Incentive: \$20,000

Relocation: Between \$9,000-15,000 (*Based on Location*)

Fee Premium: 21.42%

Annual Retention Fee: \$33,194.88

CME Funding: Up to \$5,720 for Over Four Years (*Based on Location*)

- KOOTENAY BOUNDARY -

NELSON

BROWSE CAREERS

TOURISM / WEATHER / HOUSING

Nelson is set on the shores of the gorgeous Kootenay Lake and surrounded by the spectacular Selkirk Mountains. This hamlet is consistently ranked Best Ski Town in North America. Nelson's mountain biking trails offer everything from gentle railway grades to technical tracks. Kokanee Springs captivates with awe-inspiring fairways and meticulous greens. Tranquility and discovery await in the pristine embrace of Kootenay Lake and nearby Ainsworth Hot Springs.

KOOTENAY LAKE HOSPITAL

Kootenay Lake Hospital (KLH) is a thriving community health-care facility with 30 acute care beds providing exceptional health care services to Nelson and the surrounding area, consisting of approximately 28,000 residents and visitors. KLH offers vital medical services, ranging from emergency care to advanced treatments, ensuring the utmost well-being of our patients. We provide a comprehensive array of services, including state-of-the-art diagnostic imaging, cutting-edge laboratory services, transformative surgical procedures, tender-hearted maternity care, and more. With a new cardiovascular ultrasound system coming this fall, we will be well-positioned to expand our cardiology offerings as well. Our team of specialists covers diverse fields such as obstetrics and gynecology, pediatrics, internal medicine, ophthalmology, neurology, radiology, emergency medicine, and oncology.

Additionally, we regularly host visiting specialists for general surgery, orthopedics, and urology. Join our team of skilled and empathetic healthcare professionals and experience the gratification of working in a warm and community-oriented environment, making a profound impact on the health and wellness of the vibrant Nelson community.

MAY BE ELIGIBLE FOR THE FOLLOWING RURAL BENEFITS

Recruitment Incentive: \$15,000

Relocation: Between \$9,000-15,000 (*Based on Location*)

Fee Premium: 11.34%

Annual Retention Fee: \$17,573.76

CME Funding: Up to \$5,720 for Over Four Years (*Based on Location*)

- OKANAGAN -

OLIVER

BROWSE CAREERS

TOURISM / WEATHER / HOUSING

Surrounded by picturesque orchards, and vineyards framed by forested mountains, Oliver is known as the Wine Capital of Canada, and an ideal location for outdoor recreational pursuits. Oliver's abundance of agriculture makes it easy to enjoy fresh local produce from fruit and vegetables stands. Opportunities for water sports are almost limitless given the abundance of lakes in the area. cycling, wildlife viewing, and horseback riding are also prevalent.

SOUTH OKANAGAN GENERAL HOSPITAL

South Okanagan General Hospital (SOGH) is a level one community hospital serving the Okanagan health service area. It caters to approximately 12,000 residents from Oliver, Osoyoos, and Okanagan Falls, as well as an additional 10,000 people from nearby rural communities. The hospital provides a comprehensive range of services, including a 24/7 emergency department, 18 inpatient beds, outpatient and ambulatory care, acute care, allied health services, pharmacy, x-ray, and laboratory services. The emergency department features overlapping shifts during peak times, with adjustments made seasonally.

For the most urgent cases, referrals are typically directed to Penticton Regional Hospital.

MAY BE ELIGIBLE FOR THE FOLLOWING RURAL BENEFITS

Recruitment Incentive: \$10,000

Relocation: Between \$9,000-15,000 (*Based on Location*)

Fee Premium: 4.73%

Annual Retention Fee: \$7,322.40

CME Funding: Up to \$5,720 for Over Four Years (*Based on Location*)

- OKANAGAN -

PENTICTON

BROWSE CAREERS

TOURISM / WEATHER / HOUSING

PENTICTON

app

Penticton is flanked by tree-trimmed mountain slopes, dramatic clay cliffs and Okanagan and Skaha Lake. Its lush surroundings and ideal climate, with over 2,000 hours of sunshine per year, combine to create a paradise. Indulge in wineries, golf courses, and famous sandy beaches in the summer, and skiing and snowshoeing when the snow falls. Penticton is an adventurous waterfront city offering all the amenities of a larger urban centre with small-town charm.

PENTICTON REGIONAL HOSPITAL

Penticton Regional Hospital (PRH) is a 158-bed acute care facility responsible for providing core medical and surgical specialty services to surrounding population of approximately 90,000 people. PRH offers 24-hour emergency and trauma services, acute services, ambulatory and out-patient clinics, and diagnostic/paramedical services. As a regional facility and secondary referral centre for the South Okanagan and Similkameen Valley, you will be joining a complement of excellent medical and surgical specialists with available on site computed tomography (CT), nuclear medicine and medical resonance imaging (MRI). PRH has a ten-bed intensive care unit (ICU). PRH also serves as the referral base for hematology/transfusion medicine for the smaller local hospitals in Oliver and Princeton.

In April 2019, PRH opened phase one of the David E. Kampe Tower (DKT), a state-of-the-art patient care tower. DKT includes a brand new ambulatory care centre, surgical services center, 84 medical/surgical inpatients beds in single patient rooms, a new medical device reprocessing unit, and space for the UBC Faculty of Medicine Program. Phase two, completed in December 2021, includes the full renovation and expansion of the PRH emergency department including two new trauma bays, 12 acute care beds, 14 streaming rooms, and chairs along with two consult rooms and two seclusion rooms.

COMPENSTATION AND RELOCATION

Estimated Gross Income: Competitive

Relocation: Between \$9,000-15,000 (*Based on Location*)

- OKANAGAN -

PRINCETON

BROWSE CAREERS

TOURISM / WEATHER / HOUSING

Princeton is a small town as rich in history as it is beauty. Ideally situated at the rolling foothills of the Cascade Mountains where the Tulameen and Similkameen Rivers meet, Princeton is the southern gateway to B.C.'s Interior. An abundance of recreational activities from hiking and cycling in the nearby provincial parks, to the many events, tournaments and fairs bring the community together throughout the year.

PRINCETON GENERAL HOSPITAL

Princeton General Hospital (PGH) is a six-bed, level one community hospital in the Okanagan health service area. Located south west of Penticton, the hospital offers acute care, laboratory, x-ray and 24-hour emergency services.

In emergency situations, this community and physicians are supported by the High Acuity Response Team (HART). HART team consists of dedicated, highly trained critical care nurses responding with a B.C. Ambulance Service (BCAS) basic life support ambulance team to provide ground or air transport for acutely ill and injured patients from outlying rural and remote communities to higher levels of care. When required, a respiratory therapist will also be called in to assist. This advanced level of support allows the physician to stay in the community while knowing that his/her critically ill patients are being transported by a team of specialists. HART nurses for this community are based at Penticton Regional Hospital, where they support the emergency department and intensive care unit when not involved in patient transports.

MAY BE ELIGIBLE FOR THE FOLLOWING RURAL BENEFITS

Recruitment Incentive: \$20,000

Relocation: Between \$9,000-15,000 (*Based on Location*)

Fee Premium: 15.23%

Annual Retention Fee: \$23,594.40

CME Funding: Up to \$5,720 for Over Four Years (*Based on Location*)

- THOMPSON CARIBOO SHUSWAP -

REVELSTOKE

BROWSE CAREERS

TOURISM / WEATHER / HOUSING

Princeton is a small town as rich in history as it is beauty. Ideally situated at the rolling foothills of the Cascade Mountains where the Tulameen and Similkameen Rivers meet, Princeton is the southern gateway to B.C.'s Interior. An abundance of recreational activities from hiking and cycling in the nearby provincial parks, to the many events, tournaments and fairs bring the community together throughout the year.

PRINCETON GENERAL HOSPITAL

The Queen Victoria Hospital (QVH) is a 10-bed level one community hospital, which offers acute care, laboratory, obstetrics, and operative and emergency services. Emergency services operates 24/7. Services includes physician offices, patient and rehab care, and surgical services.

Transfers to a major medical centre go to Kelowna, British Columbia (193 KM).

Mt. Cartier Court, which is adjacent to the hospital, offers residential care and has 44 private rooms.

MAY BE ELIGIBLE FOR THE FOLLOWING RURAL BENEFITS

Recruitment Incentive: \$20,000

Relocation: Between \$9,000-15,000 *(Based on Location)*

Fee Premium: 14.98%

Annual Retention Fee: \$23,214.72

CME Funding: Up to \$5,720 for Over Four Years *(Based on Location)*

- THOMPSON CARIBOO SHUSWAP -

SALMON ARM

BROWSE CAREERS

TOURISM / WEATHER / HOUSING

Situated in a lush valley on the shores of beautiful Shuswap Lake, the city of Salmon Arm is the economic hub of the Shuswap Lakes region. Panoramic lake views, rolling farm land and forested mountains attract visitors from around the world as does its wide variety of cultural, seasonal, and outdoor recreation opportunities. From hiking to boating, to the annual Salmon Arm Roots & Blues Festival, there is no shortage of opportunities in this family-friendly community.

SHUSWAP LAKE GENERAL HOSPITAL

Shuswap Lake General Hospital (SLGH) is a newly renovated 40-bed, level two community hospital in the Thompson Cariboo Shuswap health service area. Located in Salmon Arm, between Kamloops and Revelstoke, the hospital services the surrounding draw population of approximately 37,000 people. This hospital offers a 24-hour new emergency department with a registered nurse triage, laboratory and radiology (X-ray), surgical, acute care beds, ambulatory and outpatient care, obstetrical care, and diagnostic/paramedical services.

The on-site medical team includes local surgeons, internists, and radiologists. Additional features include two operating rooms, a modern computed tomography (CT), Echocardiography, level two intensive care unit (ICU) with three beds, and has visiting clinics that include orthopedics, urology, obstetrics/gynecology, and pediatrics. Internists and family physicians hold University of British Columbia (UBC) clinical appointments hosting medical students, residents, and general internal medicine (GIM) fellows.

In emergency situations, this community and physicians are supported by the High Acuity Response Team (HART).

MAY BE ELIGIBLE FOR THE FOLLOWING RURAL BENEFITS

Recruitment Incentive: \$10,000

Relocation: Between \$9,000-15,000 (*Based on Location*)

Fee Premium: 8.12%

Annual Retention Fee: \$12,583.68

CME Funding: Up to \$5,720 for Over Four Years (*Based on Location*)

- KOOTENAY BOUNDARY -

TRAIL

BROWSE CAREERS

TOURISM / WEATHER / HOUSING

In the heart of the Selkirk and Monashee Mountains, Trail is surrounded by crystal-clear lakes and lush forests that are home to a variety of wildlife. Winter adventures become a part of your everyday life with nearby Red Mountain Resort. Hike Sunningdale or Miral Heights for breathtaking views. If you're a mountain biker, you'll love the singletrack trails; if you're a water enthusiast, you'll love the numerous lakes in it's landscape.

KOOTENAY BOUNDARY REGIONAL HOSPITAL

Kootenay Boundary Regional Hospital (KBRH) is the leading diagnostic and acute care facility in the West Kootenays.

Committed to meeting the health care needs of 85,000 residents in the Kootenay Boundary region, we provide a comprehensive array of services. These include round-the-clock emergency and trauma care, a level two containment laboratory (CL2), an intensive care unit, acute care facilities, a renal dialysis unit, and a neonatal ICU.

Our steadfast team of specialists covers various fields such as ophthalmology, otolaryngology, orthopedic surgery, pediatrics, plastic surgery, psychiatry, urology, general surgery, obstetrics and gynecology, neurology, oncology, and internal medicine.

As the regional hub for the 24-hour High Acuity Response Team (HART), we ensure the delivery of expert care to critically ill and injured patients.

MAY BE ELIGIBLE FOR THE FOLLOWING RURAL BENEFITS

Recruitment Incentive: \$15,000

Relocation: Between \$9,000-15,000 *(Based on Location)*

Fee Premium: 11.38%

Annual Retention Fee: \$17,790.72

CME Funding: Up to \$5,720 for Over Four Years *(Based on Location)*

- OKANAGAN -

VERNON

BROWSE CAREERS

TOURISM / WEATHER / HOUSING

In the heart of the Okanagan Valley, Vernon presents a tableau of life that's both vibrant and peaceful. With a climate that graces the city with four distinct seasons, Vernon is a year-round playground for those who seek the thrill of outdoor adventures and the solace of natural retreats. Kalamalka, Okanagan and Swan Lakes lure beachgoers, paddlers, and anglers. In winter, SilverStar transforms into a skier's paradise.

VERNON JUBILEE HOSPITAL

Kootenay Boundary Regional Hospital (KBRH) is the leading diagnostic and acute care facility in the West Kootenays.

Committed to meeting the health care needs of 85,000 residents in the Kootenay Boundary region, we provide a comprehensive array of services. These include round-the-clock emergency and trauma care, a level two containment laboratory (CL2), an intensive care unit, acute care facilities, a renal dialysis unit, and a neonatal ICU.

Our steadfast team of specialists covers various fields such as ophthalmology, otolaryngology, orthopedic surgery, pediatrics, plastic surgery, psychiatry, urology, general surgery, obstetrics and gynecology, neurology, oncology, and internal medicine.

As the regional hub for the 24-hour High Acuity Response Team (HART), we ensure the delivery of expert care to critically ill and injured patients.

COMPENSTATION AND RELOCATION

Estimated Gross Income: You will be compensated according to the FFS model.*

Relocation: Between \$9,000-15,000 *(Based on Location)*

** An additional \$656 stipend is provided for shifts between 2300 - 0800 hours.*

- THOMPSON CARIBOO SHUSWAP -

WILLIAMS LAKE

BROWSE CAREERS

TOURISM / WEATHER / HOUSING

Williams Lake is in the Cariboo Chilcotin region, and is famous for the annual Williams Lake Stampede. A vast array of lakes, rivers and hiking and biking trails, makes Williams Lake and the surrounding area a great place for outdoor enthusiasts to camp, fish, hunt and play during the summer months while winter months bring the enjoyment of snowmobiling, skiing, snowboarding, and ice fishing for the winter months. Williams Lake has something for everyone.

CARIBOO MEMORIAL HOSPITAL

Cariboo Memorial Hospital (CMH) is under construction with planned completion of 2026! The CMH redevelopment project includes and an addition to the existing hospital as well as renovations to the existing facility. The addition will add 25 in-patient beds (53 in total), a new emergency department, mental-health unit, and cancer department. A new maternity clinic has opened, dedicated to providing comprehensive care and support to expectant mothers in the Cariboo region.

Currently, CMH is a level two community hospital in Williams Lake with 28 inpatient beds. CMH hospital offers ER, ICU, OR, med-surg, cardiology unit, and obstetrical units. Lab and diagnostic imaging on site; outpatient hemodialysis unit operated on-site. Residential beds are embedded within the med-surg unit on second floor of hospital.

Deni House is adjacent to CMH, embodying a resident centered philosophy designed to help people function at their highest level and provide the best quality of life. It has 13 private and five three-bed rooms. Nine of the beds are designated as short stay, including two palliative beds, and ALCP's (two beds).

MAY BE ELIGIBLE FOR THE FOLLOWING RURAL BENEFITS

Recruitment Incentive: \$15,000

Relocation: Between \$9,000-15,000 *(Based on Location)*

Fee Premium: 12.32%

Annual Retention Fee: \$19,092.48

CME Funding: Up to \$5,720 for Over Four Years *(Based on Location)*

- INTERIOR HEALTH -

LOCUM OPPORTUNITIES

LOCUMCOORDINATOR@INTERIORHEALTH.CA

Interior Health is seeking locum ED physicians to work in several of our emergency departments across our region.

Come and join us in our world renowned vacation destination!

100 MILE HOUSE | THOMPSON CARIBOO SHUSWAP

Compensation models include Alternative Payment Program (APP).

- **Twelve (12) Hour Shift**

- *EMFP (A) Rate:* \$2,614.56 + RPP 16.66% + Applicable After-Hours Premiums
- *EMSP (B) Rate:* \$2,883.36 + RPP 16.66% + Applicable After-Hours Premiums

- **Travel:** Accommodation, meals while traveling, car rental, and airfare.
 - **Travel Stipend:** \$250 - \$1,500 based on time. *Maximum \$1,500 per round trip.*
-

CRANBROOK | EAST KOOTENAYS

Compensation models include Alternative Payment Program (APP).

- **Eight (8) Hour Shift**

- *EMFP (A) Rate:* \$2,348.50 + Applicable After-Hours Premiums
- *EMSP (B) Rate:* \$2,597.62 + Applicable After-Hours Premiums

- **Travel:** Accommodation, meals while traveling, car rental, and airfare.
- **Travel Stipend:** \$250 - \$1,500 based on time. *Maximum \$1,500 per round trip.*

Note: Certificate of College of Family Physicians of Canada - Emerg Med (CCFP-EM) is required.

CRESTON | KOOTENAY BOUNDARY

Compensation models include Alternative Payment Program (APP).

- **Seven (7) Hour Shift (Day)**

- *EMFP (A) Rate:* \$1,912.18 + RPP 16.66% + Applicable After-Hours Premiums
- *EMSP (B) Rate:* \$2,108.71 + 16.66% + Applicable After-Hours Premiums

- **Nine (9) Hour Shift (Overnight)**

- *EMFP (A) Rate:* \$2,458.52 + 8.12% + Applicable After-Hours Premiums
- *EMSP (B) Rate:* \$2,731.20 + 8.12% + Applicable After-Hours Premiums

- **Travel:** Accommodation, meals while traveling, mileage, and airfare.

GRAND FORKS | KOOTENAY BOUNDARY

Compensation models include APP, Income Guarantee, and FFS.

- **APP Redeployment:** Only available to current IH physicians currently signed onto APP contract with home site.
 - **Income Guarantee (Includes MOCAP)**
 - *Weekday Shift Rate:* \$4,058.00
 - *Weekend Shift Rate:* \$4,354.00
 - **Travel:** Accommodation, meals while traveling, car rental, and airfare.
 - **Travel Stipend:** \$250 - \$1,500 based on time. Maximum \$1,500 per round trip.
-

KELOWNA | OKANAGAN

Compensation models include FFS.

Note: *Certificate of College of Family Physicians of Canada - Emerg Med (CCFP-EM) is required.*

LILLOOET | THOMPSON CARIBOO SHUSWAP

Compensation models include APP, FFS, and Rural Locum Program.

- **APP Redeployment:** Only available to current IH physicians currently signed onto APP contract with home site.
- **RLP Rate:** \$1,453 + MOCAP
- **Travel:** Accommodation, meals while traveling, mileage, and airfare.

MERRITT | THOMPSON CARIBOO SHUSWAP

Compensation models include APP - Redeployment or FFS.

- **APP Redeployment:** Only available to current IH physicians currently signed onto APP contract with home site.
 - **Fee For Service (FFS)**
 - *Weekday Billing Rate:* \$3,000 + MOCAP
 - *Weekend Billing Rate:* \$4,000 + MOCAP
 - **Travel:** Accommodation, meals while traveling, car rental, and airfare.
 - **Travel Stipend:** \$250 - \$1,500 based on time. Maximum \$1,500 per round trip.
-

OLIVER | OKANAGAN

Compensation models include Alternative Payment Plan (APP).

- **EMFP (A) Rate:** \$209.09 (Hourly) + RPP 4.73% + Applicable After-Hours Premiums
 - **EMSP (B) Rate:** \$231.27 (Hourly) + RPP 4.73% + Applicable After-Hours Premiums
 - **Travel:** Accommodation, meals while traveling, car rental, and airfare.
 - **Travel Stipend:** \$250 - \$1,500 based on time. Maximum \$1,500 per round trip.
-

PENTICTON | OKANAGAN

Compensation models include Alternative Payment Program (APP).

- **Six (6) Hour Shift**
 - *EMFP (A) Rate:* \$1,639.01 + Applicable After-Hours Premiums
 - *EMSP (B) Rate:* \$1,807.47 + 8.12% + Applicable After-Hours Premiums
- **Eight (8) Hour Shift**
 - *EMFP (A) Rate:* \$2,185.35 + Applicable After-Hours Premiums
 - *EMSP (B) Rate:* \$2,409.96 + Applicable After-Hours Premiums

Note: Certificate of College of Family Physicians of Canada - Emerg Med (CCFP-EM) is required.

SALMON ARM | THOMPSON CARIBOO SHUSWAP

Compensation models include Alternative Payment Program (APP).

- **Nine (9) Hour Shift (Day and Overnight)**

- *EMFP (A) Rate:* \$2,458.52 + RRP 8.12% + Applicable After-Hours Premiums
- *EMSP (B) Rate:* \$2,731.20 + 8.12% + Applicable After-Hours Premiums

- **Seven (7) Hour Shift (Overnight and Evening)**

- *EMFP (A) Rate:* \$1,912.18 + 8.12% + Applicable After-Hours Premiums
- *EMSP (B) Rate:* \$2,108.71 + 8.12% + Applicable After-Hours Premiums

- **Travel:** Accommodation.

WILLIAMS LAKE | THOMPSON CARIBOO SHUSWAP

Compensation models include Alternative Payment Program (APP).

- **Eight (8) Hour Shift**

- *EMFP (A) Rate:* \$2,348.50 + Applicable After-Hours Premiums
- *EMSP (B) Rate:* \$2,597.62 + Applicable After-Hours Premiums
- \$1,000 incentive for baseline shift coverage or \$650 shift incentive for overlap.
- Extendable to twelve (12) hour shift available.
- **Travel:** Accommodation, meals while traveling, car rental, and airfare.
- **Travel Stipend:** \$250 - \$1,500 based on time. *Maximum \$1,500 per round trip.*

URGENT LOCUMS

As of September 6, 2024

GRAND FORKS | KOOTENAY BOUNDARY

Shifts are 24-hour with approximately 30-35 patients seen per shift.

- **October:** 7, 18, 20, 21, 26
- **November:** 18, 20, 29
- **December:** 16, 27, 30

LILLOOET | THOMPSON CARIBOO SHUSWAP

For details, please contact Dr. Gulav Naman at Gulav.Naman@InteriorHealth.ca.

MERRITT | THOMPSON CARIBOO SHUSWAP

Shifts are 24-hour with approximately 30-35 patients seen per shift.

- **October:** 4, 7, 8, 12, 13, 19, 20, 21

OLIVER | OKANAGAN

- **October Morning (0700 - 1600):** 5, 12, 13, 14, 21, 24
- **October Afternoon (1300 - 2000):** 1, 12, 21, 22, 24, 27, 29, 31
- **October Night (1900 - 0700):** 4, 5, 7, 12, 16, 25, 26, 30

WILLIAMS LAKE | THOMPSON CARIBOO SHUSWAP

- **October Morning (0600 - 1400):** 19
- **October Overlap (1200 - 2000):** 14, 21, 30
- **October Afternoon (1400 - 2200):** 2, 26, 31
- **October Night (2200 - 0600):** 1, 9, 30, 31

LEARNING, DEVELOPMENT, TRAINING, AND RESEARCH

Access opportunities for medical staff to advance their careers through ongoing education. We promote a wide range of quality education opportunities.

Continuing Professional
Development

Project ECHO

Indigenous Cultural
Safety and Humility

Research

Information Privacy
and Security Training

Rural Continuing
Medical Education

Leadership
Development

Simulation

Mentorship and
Coaching

The X-Change

Practice
Enhancement