

## Wait, why are staff asking me about my drug use?

We get that it can feel weird to be asked about drugs when you are Long-Term Care - let us explain:

We want to make sure we understand all relevant health information. We ask people about this as a part of regular care planning. Sometimes drugs can interfere with medical care (some things just shouldn't be mixed) & we want to keep you as safe as possible!

Too many people are dying from the Toxic Drug Crisis. We care about your health & wellbeing, & will support you whether you use a little, a lot - or not at all.

We're here to help!  
Follow QR Code for  
Substance Use  
Services in IH



Thank you to our Peer Advisors, whose lived & living expertise guided the creation of this resource.

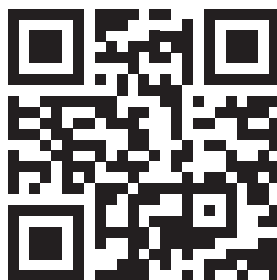


## Your Experience Matters

If you feel you were treated poorly or stigmatized due to your drug use, please tell the manager. If your concerns are not resolved, report it to the Patient Care Quality Office!



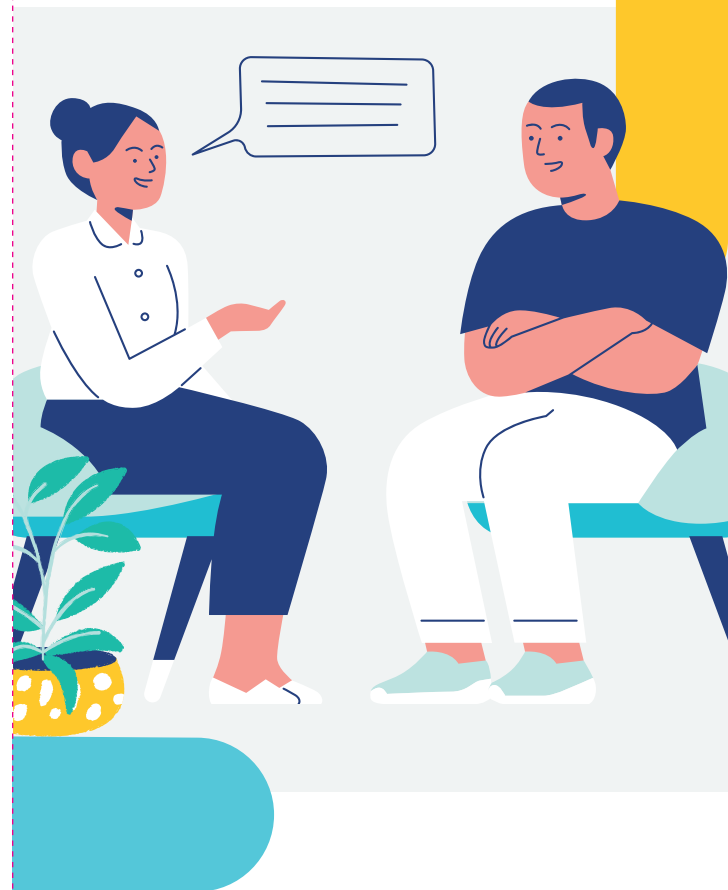
Or to the BC Office of Human Rights



Substance Use Care  
is Health Care!



Interior Health



## ILLICIT DRUGS IN LONG-TERM CARE

*a guide for people who use drugs,  
by people who use drugs and allies.*



You do not need to stop using drugs to receive medical care, unless the doctor has a specific medical reason.



You have the right to medical support in managing your addiction while living in Long-Term Care.



You have the right to refuse treatment for your drug use & you should be included in decisions about your care.



You may temporarily leave the Long-Term Care home to use your drugs offsite.



You are NOT allowed to have or use your drugs in the Long-Term Care home.\*\*



IH is a SMOKE-FREE environment. This means you can't smoke or vape in your room, or anywhere else on IH property.\*\*



Staff should NOT search or remove your belongings without your consent unless they have a specific safety reason.\*



Staff CANNOT store your drugs. If your drugs are removed they will NOT be returned to you.

\* There are some circumstances where resident consent is not required to remove belongings. These are difficult situations where we strive to uphold both a resident's rights & the safety of everyone involved.

\*\* Having or using illicit drugs in the Long-Term Care home may result in your drugs being removed and destroyed.

## What is available to help with my drug use while I am here?

We recognize that substance use is a part of your overall health & we want to ensure that your substance use needs are reflected in your care plan.

We can help with referrals to substance use supports, such as Opioid Agonist Treatment (OAT), accessing harm reduction supplies, substance use counselling & other types of treatment.

Ask your nurse for more information!



## I know I can't use in the home, but I am really struggling...

If you are comfortable, let staff know that you are struggling with cravings or are worried about withdrawal. We may have some ideas to help!

If you decide to use your own drugs, ask staff where you can go. We may want to talk about safety with you due to the toxicity of the street supply.