

2025 QUICK FACTS

Updated June 2, 2025

- 59 MUNICIPALITIES
- 54 FIRST NATION COMMUNITIES
- 32 PRIMARY CARE CLINICS
- 14 MÉTIS CHARTERED COMMUNITIES
- 7 REGIONAL HOSPITAL DISTRICTS
- 11 DIVISIONS OF FAMILY PRACTICE
- 10 PRIMARY CARE NETWORKS

SERVING MORE THAN
899,494
INDIVIDUALS ACROSS
THE SOUTHERN
INTERIOR OF B.C.

AND COVERING
MORE THAN
215,000
SQ KILOMETRES



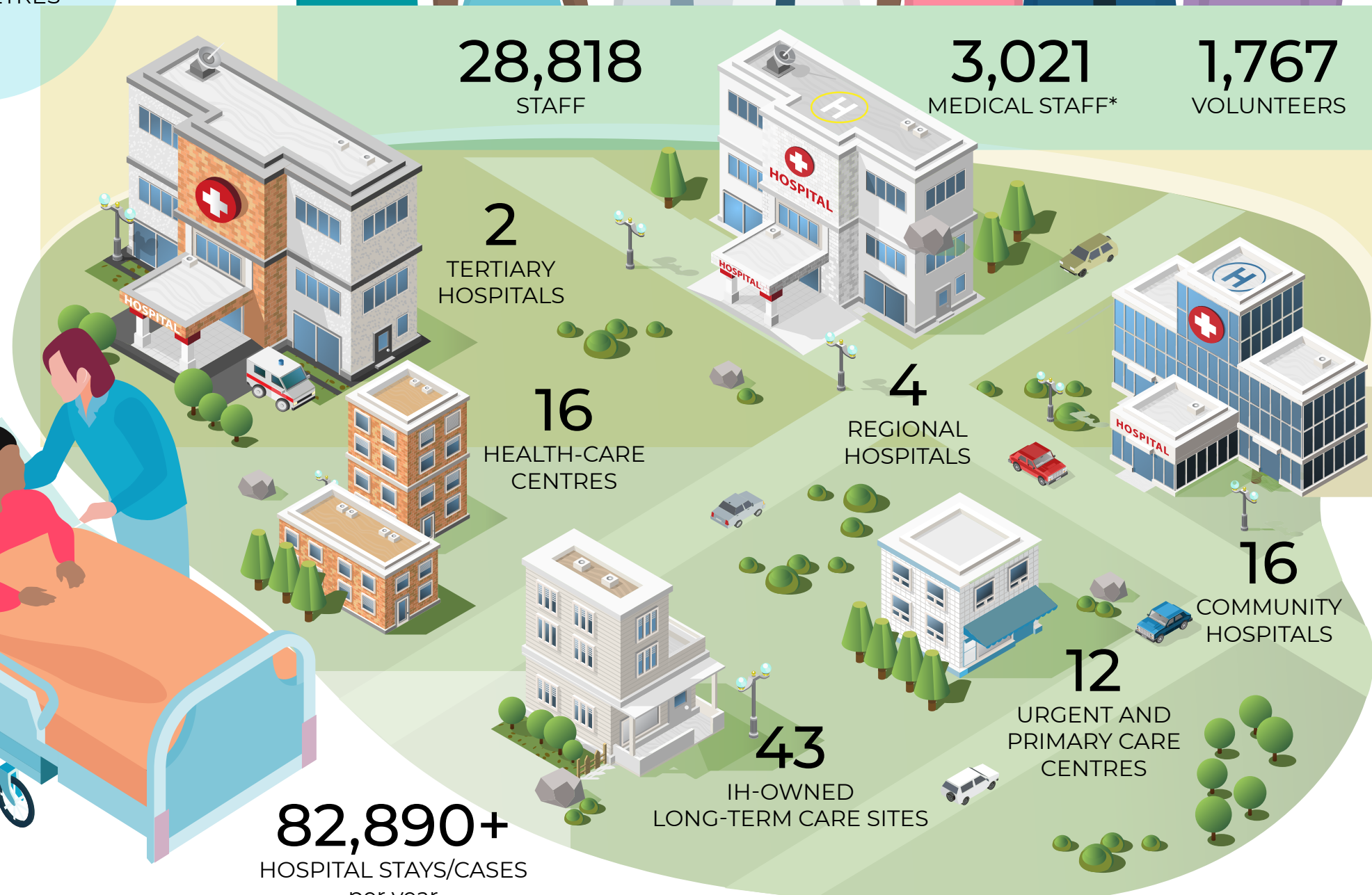
30,870
ACTIVE MENTAL HEALTH
AND SUBSTANCE USE CLIENTS
served in community settings
each year

39,018
HOME HEALTH CLIENTS
served in community settings
each year

9,657
LONG-TERM CARE AND
ASSISTED LIVING RESIDENTS
in IH-owned and partner sites
served per year



82,890+
HOSPITAL STAYS/CASES
per year



*physicians, nurse practitioners, dentists and midwives