

The Immunizer

A quarterly newsletter for community vaccine providers (CVP) in the Interior Health Region.

September 2023

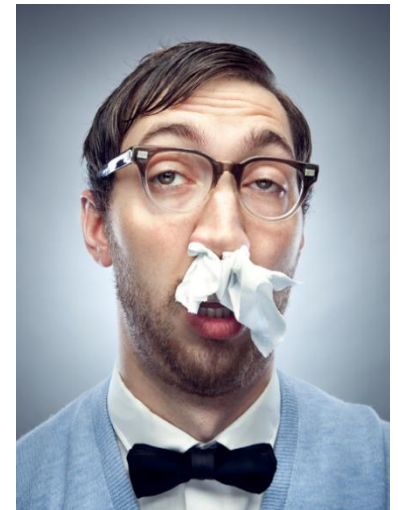
Respiratory Campaigns

In preparation of the upcoming respiratory season, please remember that IH uses an allocation model for influenza vaccine.

Those wishing to confirm allocations are encouraged to contact their local public health office. Those wishing to adjust influenza allocations are required to complete the [order form](#) and submit to Vaccines@interiorhealth.ca.

Providers authorized to administer COVID vaccines should submit order forms for COVID-19 and Pneumococcal Polysaccharide Vaccines. Refer to [Part 4: Biological Products \(Vaccines & Immune Globulins\) \(bccdc.ca\)](#) for eligibility, dosing and scheduling.

Interior Health will provide vaccines for those providers immunizing Long Term Care and/or Assisted Living sites. Submit a [Report of Influenza Immunization Form - Facilities \(interiorhealth.ca\)](#) for each site, this will assist in compiling stats and ensure allocations for the following season.



Influenza Immunization Education

The [Influenza Immunization Competency: Foundations of Influenza Disease & Vaccines course](#) has been revised and is available on LearningHub: Course #19654.

- ✓ The complete [BCCDC Immunization Competency Course](#) is recommended for all new vaccine providers and has been adapted to be a comprehensive competency course for new immunizers who will be providing **influenza vaccines only**. This course is based on the [Immunization Competencies for BC Health Professionals](#). Considerations for the delivery of culturally safe care within immunization programs has been included in this revision.

The [Seasonal Influenza Updates 2023/24 course](#) is now available on LearningHub: Course #31263.

- ✓ This course provides an overview of the influenza vaccine program for the upcoming influenza season in BC.
- ✓ The [Summary – New for influenza season 2023/24](#) one page quick reference document is also available within the course and on the BCCDC website.

Rabies Post-Exposure Prophylaxis (RPEP)

Emergency Departments: There are now new pre-printed orders along with a simplified RPEP Reporting form available to assist you. These are found on the InsideNet [Clinical Decision Support Tools \(Emergency\)](#) page under **Rabies in the ED**.



School Immunizations

If you provide school immunizations in your clinic or pharmacy, here's what you need to know:

ORDERING: Use the [Publicly Funded Vaccine Order Form](#) to order school immunizations.

The IH Website: [School-Age Children & Youth Immunization](#) > **How school-aged children are immunized** provides content included in the immunization consent packages that are sent home from school.

AEFI 2-Page Form

BCCDC has created an instructional video on [How to Complete the 2-Page AEFI Form](#) for community vaccine providers to simplify reporting adverse events following immunization (AEFI). This resource is embedded on the [BCCDC Adverse Event Following Immunization \(AEFI\) page](#).

Home Health Professionals / Clinical Resources / Adverse Events Following Immunization

Adverse Events Following Immunization (AEFI)

An adverse event following immunization (AEFI) is any untoward medical occurrence in a vaccinee that follows immunization. It does not necessarily have a causal relationship with the vaccine or the immunization process.

For the criteria for the reporting of adverse events, and for help with the interpretation of adverse events following immunization and their implications for subsequent immunization, see the BC Immunization Manual, Part 5: Adverse Events Following Immunization.

Criteria for reporting an adverse event	+
How to report an AEFI	+
Anaphylaxis	+
Vaccine Injury Support Program (VISIP)	+

How to report an AEFI

If your patient experiences an adverse event

Instructions for Clinicians and Pharmacists:

Health care providers including physicians and pharmacists are required by law to report Adverse Events Following Immunization (AEFI) to monitor vaccine safety. Please complete the form [Report of Adverse Event Following Immunization](#) (for non-public health professionals reporting AEFI) and send it to the local health unit (see [Where to submit an AEFI report](#)).

Additional Resource: Instructional video "[How to complete the 2-Page AEFI Form](#)".

Pearls for Immunization Practice Course

BCCDC Pearls for Immunization Practice Course (#30919) is now available on LearningHub. The course length is approximately 2.5 hours and a certificate of completion will be generated upon completion of all four course modules and exam.

This course is intended for health care professionals who already have a theoretical and clinical understanding of immunization practice e.g., physicians (including medical students and residents), nurse practitioners and midwives or for those who have previously completed the BCCDC Immunization Competency and would like to refresh their immunization knowledge or for continuing education.

Questions?

If you have a question, we are happy to help!

- Clinical Immunization Questions: ImmunizationProgram@interiorhealth.ca
- Biological Vaccine Product Questions: Vaccines@interiorhealth.ca



Follow us on Social Media!

